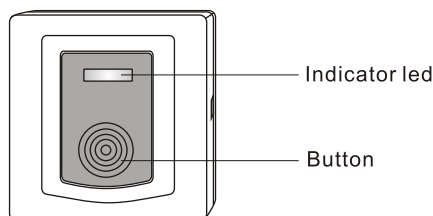


# PB-200R WIRELESS COMPATIBLE EMERGENCY BUTTON

## 1. Product appearance



## 2. Function

PB-200R emergency button is our latest R&D product, unique appearance design, ultra-thin and easy to install. Adopt wireless transmission and also wire available. No current consumption in quiescent condition, this extend the work time of the battery. The size of location hole is compatible with standard outlet box which sells on the market. So it fits more users.

## 3. Technical parameter

Working voltage: 3V (model: CR2032)

Working current: below 25mA

Wireless transmit distance: 150m-200m (straight line distance in open air)

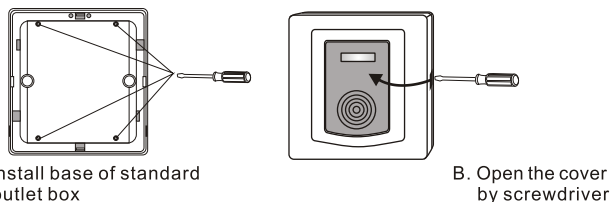
Appearance (L\*W\*H): 85cm\*85cm\*15cm

## 4. Installation

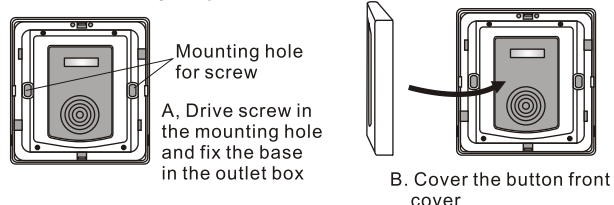
For the size of location hole are compatible with standard outlet box, there're two installing ways for your choice

①. Choose standard outlet box and we provide two screws with the product (as follows)

(1) Install standard base:

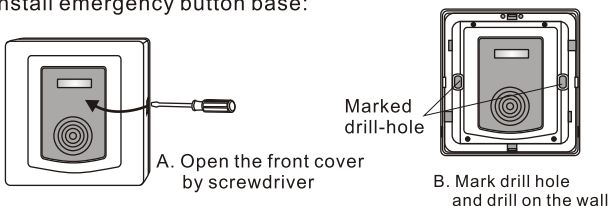


(2) Install the emergency button:

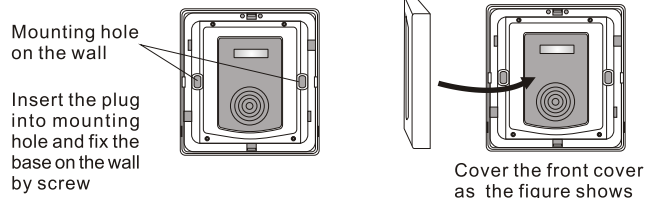


②. Use the original parts to install:

(1) Install emergency button base:



(2) Fix the button base:



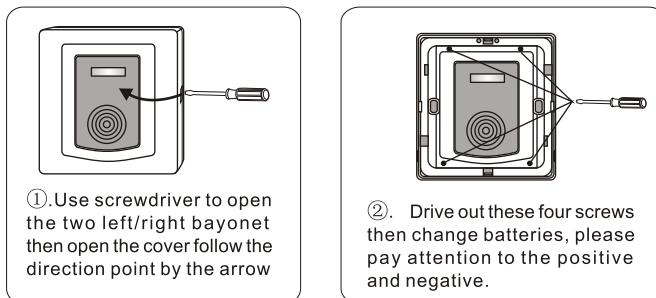
## 5. Usage Method

①. Wireless

Coding: Enter the control panel to detector enrolling step (specific refers to control panel instruction). Press the button once then hear the response sound, then enroll successful.

Deleting Code: Enter the control panel to deleting code status.

## 6. Change batteries



## 7. Accessories included

- ①. one emergency button;
- ②. two couple of screws, two screw plugs;
- ③. one hole fixing drawing;
- ④. one copy instruction.

## 8. Notes

Incorrect installation will cause abnormal working of product:

- ①. Do not install on unstable object;
  - ②. Do not install on large size metal wall or metal door;
  - ③. This product is not waterproof one, just fit for indoor use.
- For outdoor use, please strengthen waterproof protection.