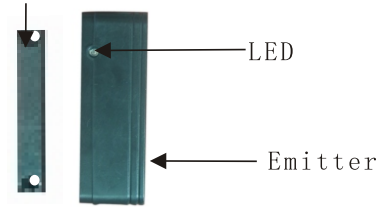


The installation guide for users of MD-215R wireless magnetic switch

1. Introduction

The MD-215R is a fully supervised mini style magnetic contact transmitter. It features door/window close/open instant alarm function. It can be connected to the control panel. It can transmit strong wireless signal, having strong intensity in 150m area. Please code it to the control panel before using, enrolling the only one address code to the control panel. When the distance between the magnetic stripe and transmitter beyond 1.5cm the transmitter will send alarm information to the panel. This detector can change wired signal to wireless signal, working as a transmitter.

Magnetic stripe



Appearance

2. Specification

Model:MD-215R

- ①Wireless sending distance(open area):inset antenna 150m.
- ②Code: 28-digit ID, 8-digit function code, 36 digits data code in total
- ③Working frequency: 433MHz/868MHz(optional)
- ④Working voltage:3V CR2032
- ⑤Battery life: about 1 year
- ⑥Current: static $\leq 5\mu\text{A}$, alarm $\leq 7-12\text{mA}$ (433MHz)
static $\leq 5\mu\text{A}$, alarm $\leq 15-25\text{mA}$ (868MHz)

- ⑦ Alarm output: alarm, tamper
- ⑧ Status report: after first electro motion or reset the detector the magnetic switch report the working status to the control panel separately after 1 minutes,6minutes. And report working status every two hours to the control panel.
- ⑨ Working Temperature: $-10^{\circ}\text{C}\sim 50^{\circ}\text{C}$
- ⑩ Dimension: 70(L) \times 23.3(W) \times 13.2(H)mm
Magnetic stripe 60(L) \times 10(W) \times 8.3(H)mm

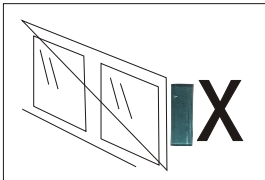
3. The main function and installation

3.1 Main functions

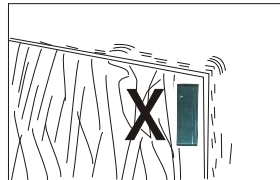
- A. Adopted low consumption CPU
- B. Adopted unique Mutil codes
- C. Auto status report
- D. Anti-lost report
- E. Open door/window indication

3.2 Installation

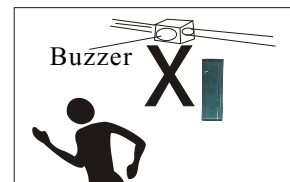
Pay attention to these following points.



Do not mount on the place possibly to be destroyed outdoor.



Do not mount at the loose place



When use as wireless detector, do not mount near strong magnetism item.

3.3 Installation introduction

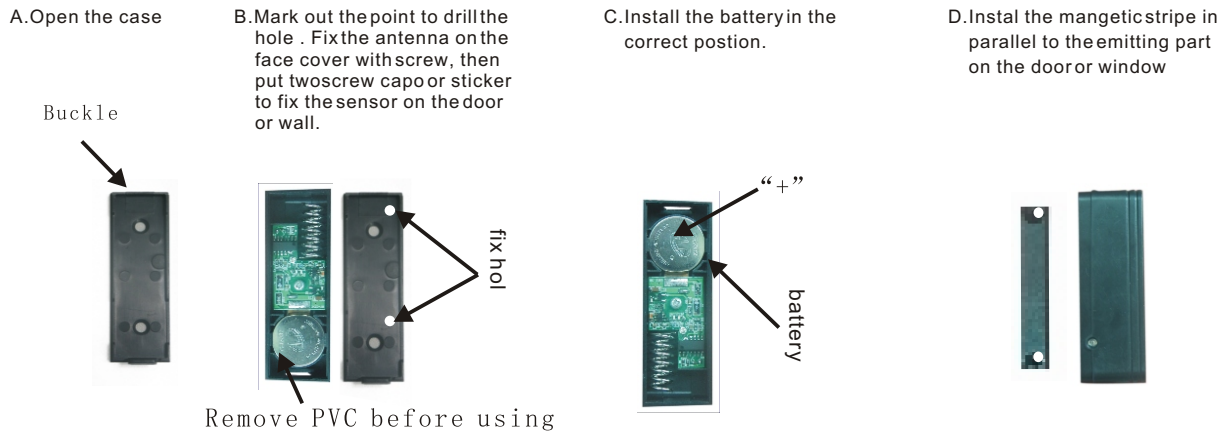
Note: This product use Cr2032 lithium battery, please pull out the label under battery first

1. code with the panel

- A. Set the wireless control pane at "auto code" mode.
- B. Let MD-215R enter working mode, parallel put transmitter and magnetic stripe together, move the magnetic stripe at the moment of pressing the ensure key on the panel and let the detector send wireless signal. Then the panel will study the code of detector.

- C、 The user also can enter address code manually, that will reduce error rate, set the control panel at manual code mode , then enter the 9-digit code on the label of transmitter.
- 2、 Testing magnetic switch: parallel move magnetic stripe and inductor. MD-215R will send signal once to the control panel, and the LED on the transmitter flick 5 times.
 - 3、 Fix the cover

4 Install follow the pictures(This drawing only for 433MHz,868MHz one is different)



Note:

1. If not drill on the wall, please use strong double side glue or other strong Bonding agent to fix the magnetic stripe and transmitter on the right place.
2. Do not mount on the base-loose place, possible to be destroyed place or with strong magnetic interference(eg. loudspeaker, high voltage cable)

5. maintenance

4.1 Change battery

The working life of battery is about one year, change battery when the signal between the detector and control panel become weak.

1. Open cover;
2. Take out used up battery and put in new battery rightly;
3. Test battery, parallel move the magnetic from transmitter, then the control panel will make alarm information.

4.2 Clean and fix the cover

The surface of the detector will be dusty when used for a long time, please use wet cloth to clean it.

6. Miscellaneous Comments

Our wireless products are very reliable and tested to high standards. However, due to low transmitting power and limited range(required by regulatory authorities , there are some limitations to be considered. it will cause the panel to make alarm at any alarm situation, following are some common examples

1. voltage instability for the control panel;
2. under voltage of detector etc.

These problem are not so difficult to solve, if needing help please contact the supplier.