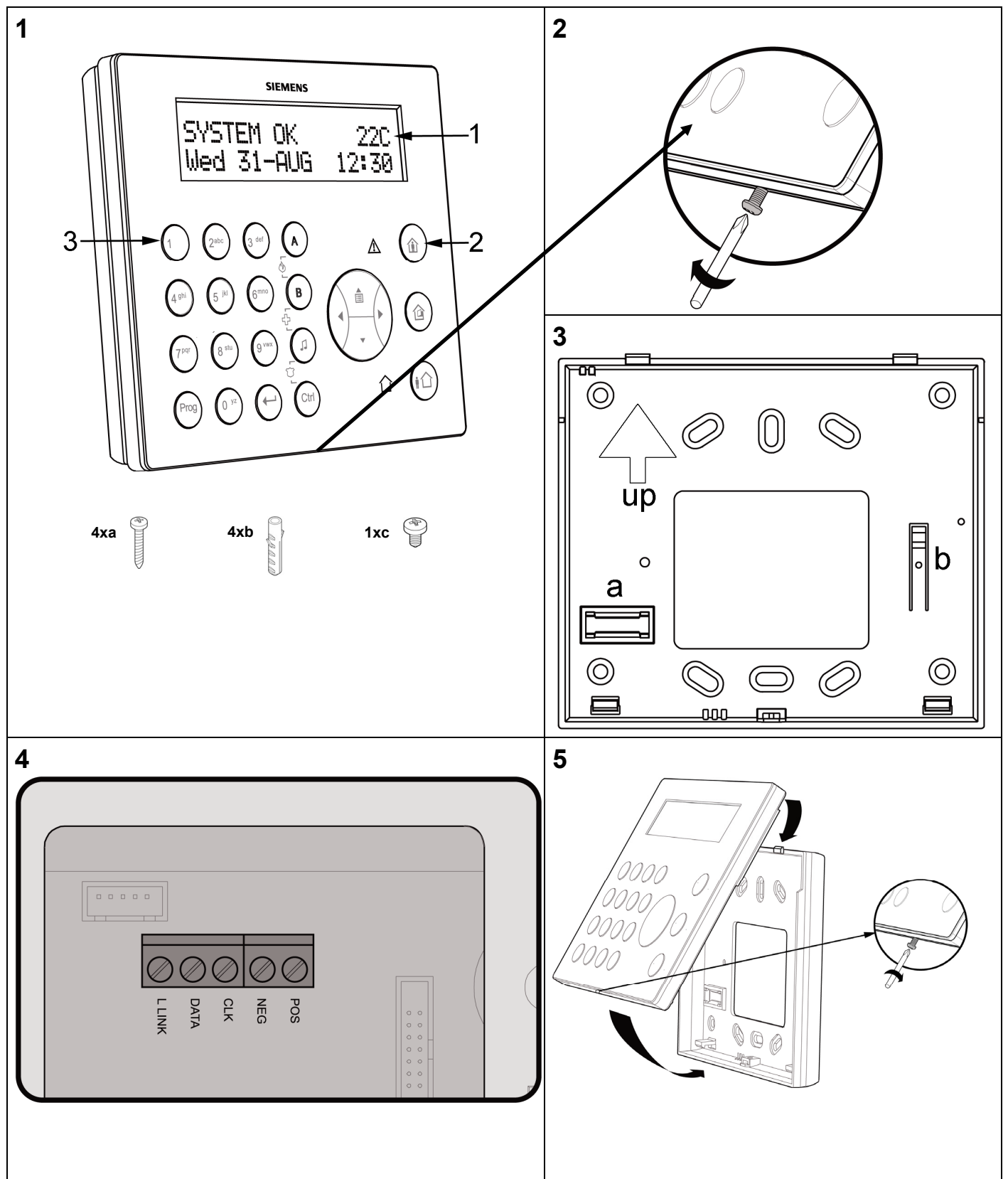


IKP6-03

LCD Keypad
LCD-Bedienteil
Clavier LCD
Teclado LCD
Tastiera LCD
Teclado numérico LC
LCD-tastgruppe
LCD-toetsenblok
Klávesnice s LCD displejem
Klawiatura LCD
LCD codeklavier
LCD Tuştakımı



EDMS: 009919_b_--



English		Installation Instruction																					
<p>⚠ Before starting to install and work with this device, please read the Safety Instructions.</p> <p>1 Scope of delivery:</p> <ul style="list-style-type: none"> • IKP6-03 LCD keypad • Screws (a) • Plugs (b) • Tamper screw (c) <p>Installation</p> <p>2 Removing the cover</p> <ul style="list-style-type: none"> ➢ Loose the retaining screw. ➢ Lift off the cover from the base. <p>3 Mounting the base</p> <p>⚠ Use only the screws and plugs supplied.</p> <ul style="list-style-type: none"> ➢ Mount the base (inside up) to the wall using the build in spirit level (a). ➢ If necessary adjust the distance to the wall of the back tamper contact (b) with the included tamper screw. <p>4 Connecting up</p> <p>⚠ Disconnect the control panel from power (main and battery).</p> <ul style="list-style-type: none"> ➢ Connect the BUS from the control panel to the IKP6-03 unit on the terminal blocks, as described in the Installer Manual. ➢ Reconnect the control panel to power: the display and the keys will light up if correctly connected. <p>⚠ If the lights are fast flashing, a connection failure had happen. Please recheck connection.</p> <p>5 Replacing the cover</p> <ul style="list-style-type: none"> ➢ Hook the cover onto the top of the base and press into position. ➢ Screw in the retaining screws. 		<p>Functions</p> <p>The user communicates with the alarm system via the keypad. The keypad displays continuous information about the status of the alarm system and allows the user to operate the system in different modes, change settings and program users' access codes.</p> <p>The keypad also keeps a log of events, which can be displayed subsequently on demand when reviewing system activities and used to analyze system performance for diagnostic purposes.</p> <p>As an additional comfort feature a temperature indication is included in the display, which shows the temperature around the installed keypad.</p> <table border="1"> <thead> <tr> <th>No.</th> <th>Name</th> <th>Description</th> </tr> </thead> <tbody> <tr> <td>1</td> <td>Display</td> <td>The LCD display shows all the information required for trouble-free operation of the system.</td> </tr> <tr> <td>2</td> <td>Function keys</td> <td>These keys are used to arm the system, enter commands to alter system settings, or scroll through the display.</td> </tr> <tr> <td>3</td> <td>Alphanumeric Kkeys</td> <td>These keys are used to enter codes, change descriptions of zones, or for programming.</td> </tr> </tbody> </table>		No.	Name	Description	1	Display	The LCD display shows all the information required for trouble-free operation of the system.	2	Function keys	These keys are used to arm the system, enter commands to alter system settings, or scroll through the display.	3	Alphanumeric Kkeys	These keys are used to enter codes, change descriptions of zones, or for programming.								
No.	Name	Description																					
1	Display	The LCD display shows all the information required for trouble-free operation of the system.																					
2	Function keys	These keys are used to arm the system, enter commands to alter system settings, or scroll through the display.																					
3	Alphanumeric Kkeys	These keys are used to enter codes, change descriptions of zones, or for programming.																					
		<p>Technical Data</p> <table border="1"> <tbody> <tr> <td>Power consumption</td> <td>100 mA (backlight on) - 40 mA (backlight off)</td> </tr> <tr> <td>Voltage</td> <td>9 - 16 V</td> </tr> <tr> <td>Blue back light</td> <td>For key illumination</td> </tr> <tr> <td>Operating temperature</td> <td>-10 - +50 °C</td> </tr> <tr> <td>Dimensions</td> <td>145 x 126 x 22 mm</td> </tr> <tr> <td>Weight</td> <td>~300 gr</td> </tr> <tr> <td>Power supply</td> <td>12 V DC (Via E-BUS)</td> </tr> <tr> <td>LCD</td> <td>KP 2 x 16 characters</td> </tr> <tr> <td>Cable connection</td> <td>recommend to use shielded cable like Kat5.</td> </tr> <tr> <td>Max. bus length</td> <td>Tested up to 200m</td> </tr> </tbody> </table> <p>Complies with: EN 50130-4+A2, EN61000-6-3, EN55022 + A1+A2+K1, B, EN50131-1, EN50131-3, Security Grade II, Environmental Class II</p> <p style="text-align: right;">Certified by: telefication</p> <p>For more detailed instructions please refer to the manuals which can be downloaded from internet: www.siemens.com/homesecurity</p>		Power consumption	100 mA (backlight on) - 40 mA (backlight off)	Voltage	9 - 16 V	Blue back light	For key illumination	Operating temperature	-10 - +50 °C	Dimensions	145 x 126 x 22 mm	Weight	~300 gr	Power supply	12 V DC (Via E-BUS)	LCD	KP 2 x 16 characters	Cable connection	recommend to use shielded cable like Kat5.	Max. bus length	Tested up to 200m
Power consumption	100 mA (backlight on) - 40 mA (backlight off)																						
Voltage	9 - 16 V																						
Blue back light	For key illumination																						
Operating temperature	-10 - +50 °C																						
Dimensions	145 x 126 x 22 mm																						
Weight	~300 gr																						
Power supply	12 V DC (Via E-BUS)																						
LCD	KP 2 x 16 characters																						
Cable connection	recommend to use shielded cable like Kat5.																						
Max. bus length	Tested up to 200m																						