

User Manual

HC-550G



1. Introduction.....	3
1.1 Application.....	3
1.2 Power Supply.....	3
1.3 Caution.....	3
1.4 Key Features.....	4
2. Whole View and Details of Camera.....	5
2.1 Front View of Camera.....	5
2.2 Back View of Camera.....	5
2.3 Bottom View of Camera.....	6
3.Quick Operation.....	6
3.1 Load Battery.....	6
3.2 Insert TF Card.....	7
3.3 Remoter.....	7
3.4 Power On.....	8
3.4.1 Test.....	8
3.4.2 ON.....	9
3.5Screen Information Display.....	9
3.6 Settings Menu.....	10
3.6.1 Camera Menu.....	10
3.6.2 Video Menu.....	12
3.6.3 System Menu.....	13
3.6.4 Time lapse setting.....	14
3.6.5MMS Menu.....	15
3.6.6 SMTP Menu.....	15
4. MMSCONFIG Setting.....	16
5. SMS Control.....	21
6. Firmware Upgrade.....	21
7. Specification.....	21
8. Packing List.....	23

1. Introduction

Thank you for choosing our highly qualified 3G SMS control Scouting Trail Camera. This 16MP HD digital camera was totally R&D by our diligent and smart engineers based on feedbacks and requirements from customers globally. Please read this introduction carefully before the camera using.

1.1 Application

- a. Instant surveillance camera for home, office, construction site, and warehouse, etc
- b. Motion-triggered infra-red night vision surveillance;
- c. Animal observation and hunting;
- d. Plant observation.

1.2 Power Supply

a. AA alkaline batteries

This camera can either work with 8x AA Alkaline batteries or 9V DC power. Please note that the voltage of rechargeable AA batteries (1.2V) is insufficient to power this device.

b. Solar Panel

To bring users better using experience, our engineers designed this camera to be able to work with most standard 6V lithium battery build-in solar panels.

c. Power Adapter

This camera can also be powered by an external 9V DC adapter. Recommend to remove the alkaline batteries when power adapter is used, to avoid surcharging.

1.3 Caution

- a. Please insert the TF-card (SIM card) when the power switch is on OFF position before testing the camera.
- b. Please do not insert or take out the TF-card when the power switch is on ON position.
- c. It is recommended to format the TF-card by the camera when used at the first time.
- d. The camera will be in USB mode when connected to a USB port of a computer. In this case, the TF-card functions as a removable disk.
- e. Please ensure sufficient power when having firmware upgrade, otherwise the upgrade process could be interrupted incorrectly. If any fault occurs after improper upgrading process, the camera may stop function properly.

1.4 Key Features

1	Built-in 2.0" TFT color screen to review photos and videos on camera
2	24pcs IR LEDs for flash range as 20 meters
3	Programmable 8/12/16 Megapixel high-quality resolution
4	Color pictures during daylight; black and white at night
5	Adjustable PIR sensitivity; HIGH, MID, LOW
6	Impressive quick trigger time: 0.5s
7	Multi-shot pictures; 1,3,6,9
8	Adjustable delay between motions; 1/5/10/30 seconds/minutes
9	Adjustable video length: 10/30/60/90 seconds
10	With 8pcs AA alkaline batteries, the longest standby time is up to 6 months
11	Available operation temperature: -20°C to 60°C
12	With specified Timer, camera can be programmed to work only during preset time period every day
13	Stamp the date, time, temperature and longitude and latitude on each picture
14	Sound Recording
15	Supports 3G/2G SIM card to get real-time photos; IMEI available.
16	With MMS/SMTP function, camera can transmit photos to 1-3 preset mobile phones or 1-3 email per trigger
17	SMS to enable camera to shoot a photo and send back instantly, ask camera to work or not, get the number of taken picture and battery status

2. Whole View and Details of Camera

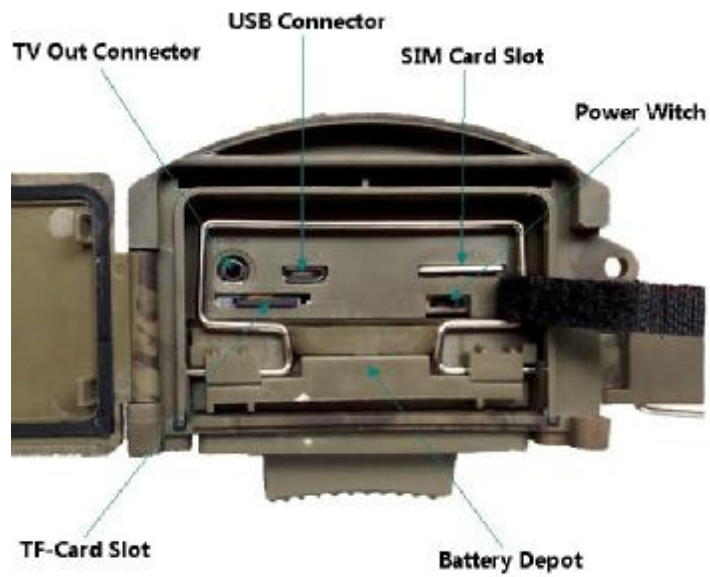
2.1 Front View of Camera



2.2 Back View of Camera



2.3 Bottom View of Camera



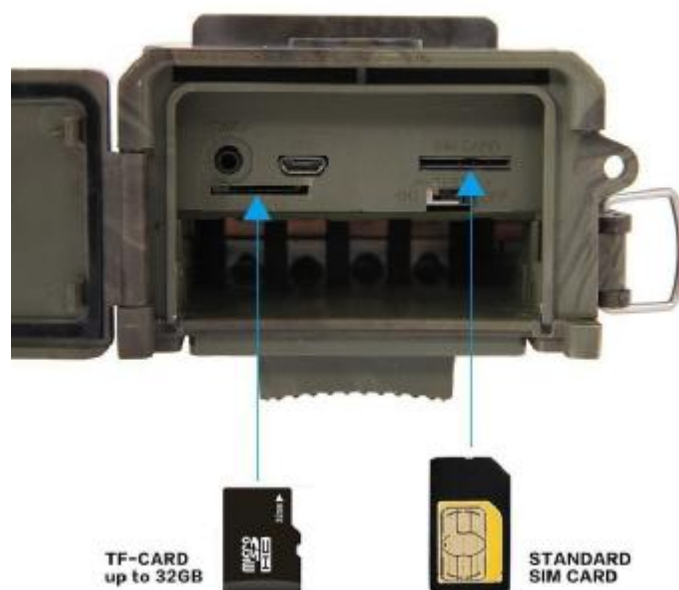
3. Quick Operation

3.1 Load Batteries



8X AA Batteries

3.2 Insert TF card and SIM card



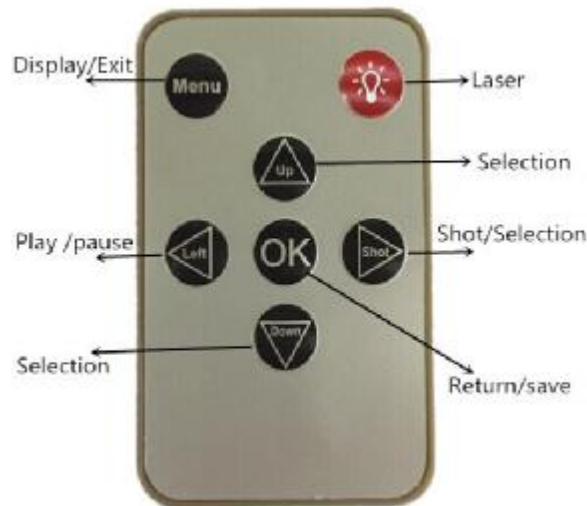
Note: To active its MMS or SMTP function, please save setting file “Parameter.dat” by MMSCONFIG to TF card.

3.3 Remoter

The infrared remoter is an input device of the camera and primarily used for customer settings. Its maximum remote distance is 9 meters.

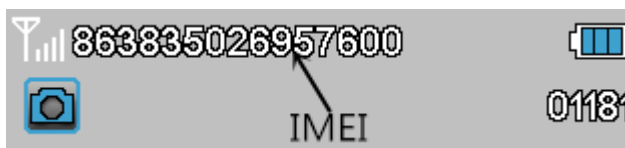


Note: Press the punctuation “” for laser light.



Note (Under TEST mode):

1. Press "Shot" directly, the camera will take picture or video directly.
2. Press "OK" directly, the captured picture or video can be viewed.
3. Viewing picture, press "Up" or "Down".
4. Viewing video, press "Left" to start, again to stop, press "OK" to return.
5. Press "Left" directly to get the IMEI (in the TEST interface).



3.4 Power on



Slide Power Switch from OFF to Test(for setting) then to ON position, the camera powers on. (Please don't slide the power switch from OFF to ON directly)

3.4.1 TEST (The first way to set the menu)

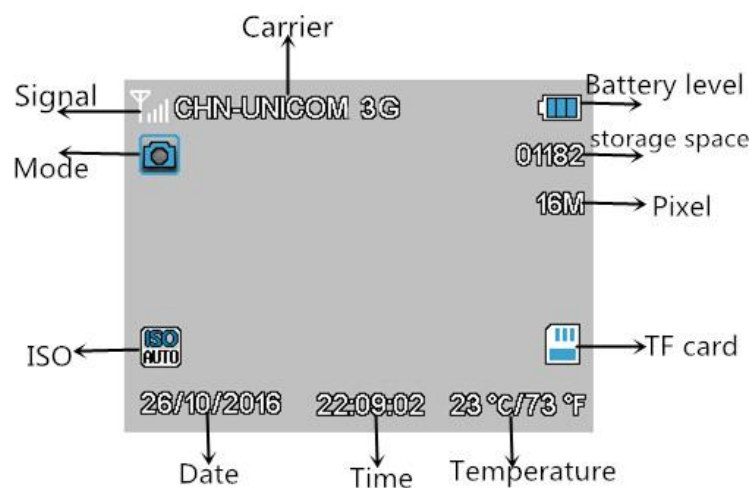
In TEST mode, the screen lights up. User can do the below operations by remoter:

- a. Setting Camera Menu, working mode includes camera, video and system setting
- b. Take picture or video (press Shot)
- c. View picture or video (Press OK)
- d. Check the MMS/SMTP is ON or OFF

3.4.2 ON

In this mode, the screen power off and remoter is useless. The camera works automatically. Will capture and send picture out if detected any motions by PIR.

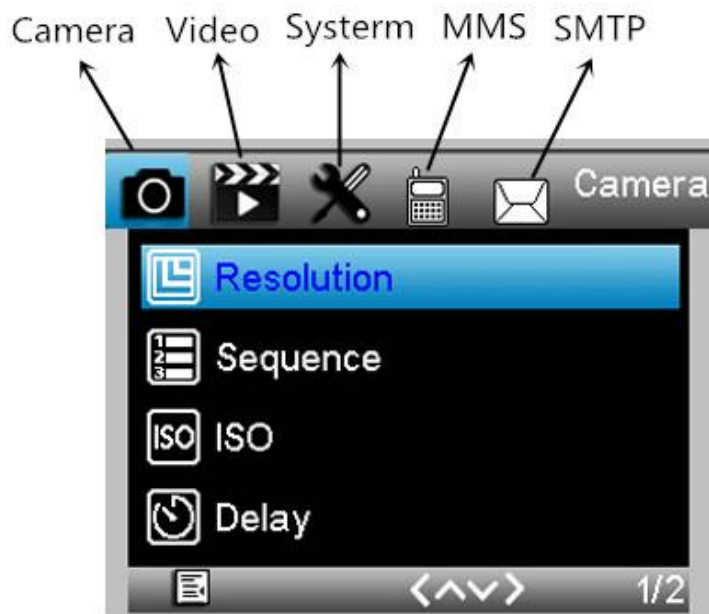
3.5 Screen Information Display



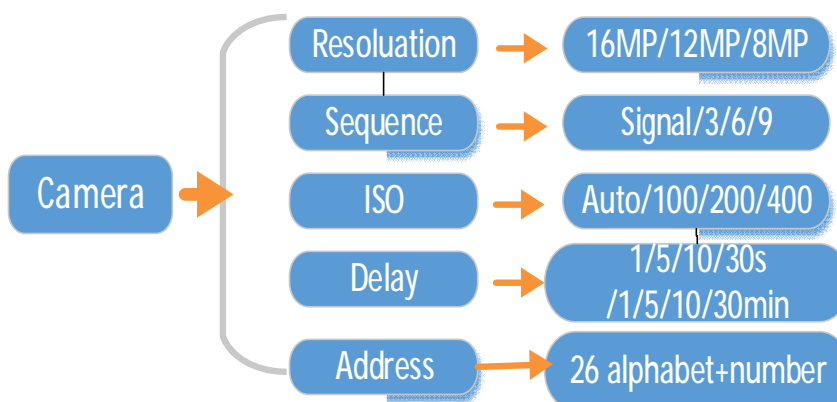
Note: To active its MMS or SMTP function, the camera should find signal and SIM card firstly.

3.6 Settings Menu

There are five parts setting of the camera, user can fix Camera, Video and System menu setting by remoter; MMS menu and SMTP menu setting by software “MMSCONFIG” from CD.



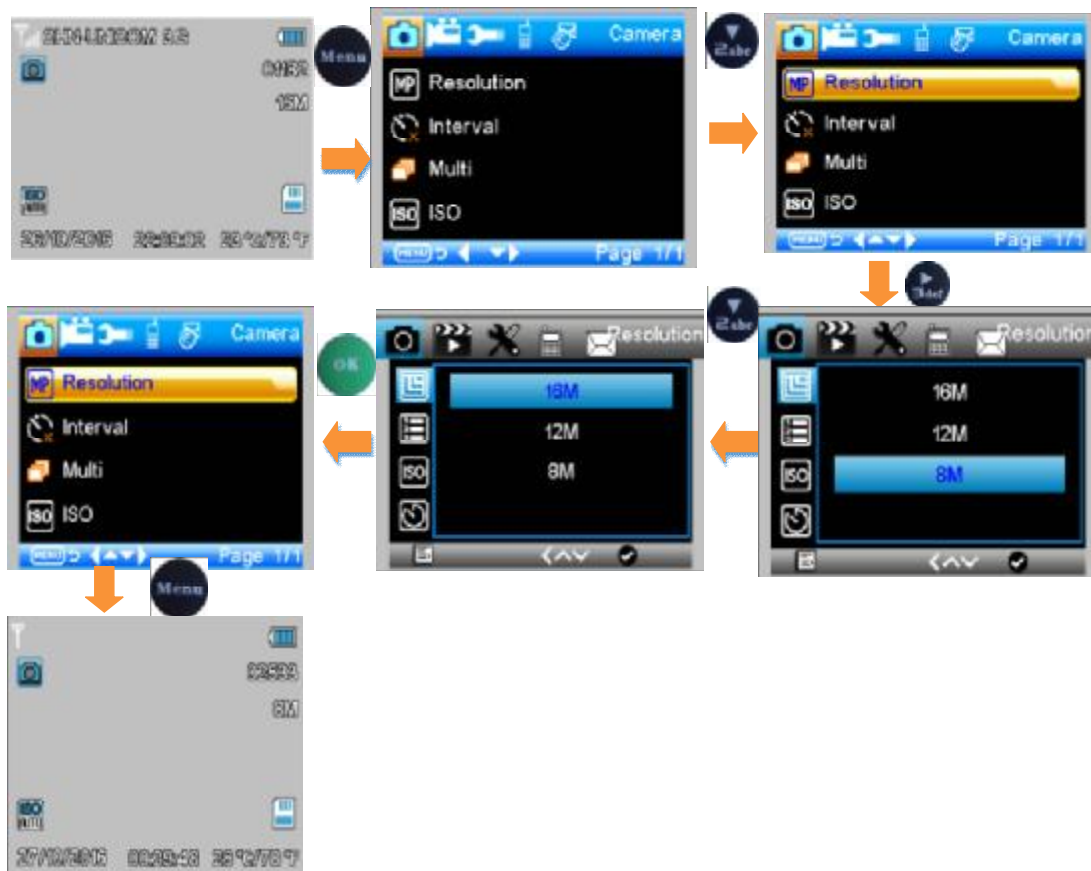
3.6.1 Camera Menu setting



Description:

Menu	Content	Description
Resolution	16MP, 12MP, 8MP	Photo size
Delay	1/5/10/30 sec/min	Waiting time from the last taking
Sequence	1/3/6/9	Number of photos taken every time
ISO	Auto,100,200,400	The camera exposure level
Address	26alphabet +number	Camera ID

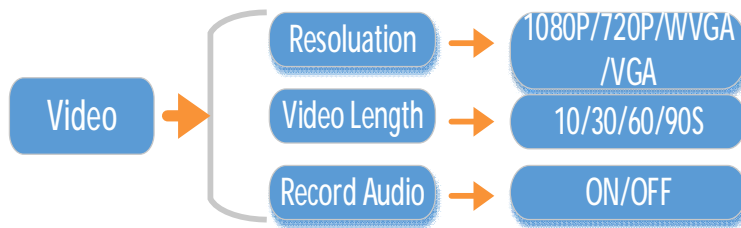
To change 16MP to 8MP Resolution, the remoter operations are:



Note:

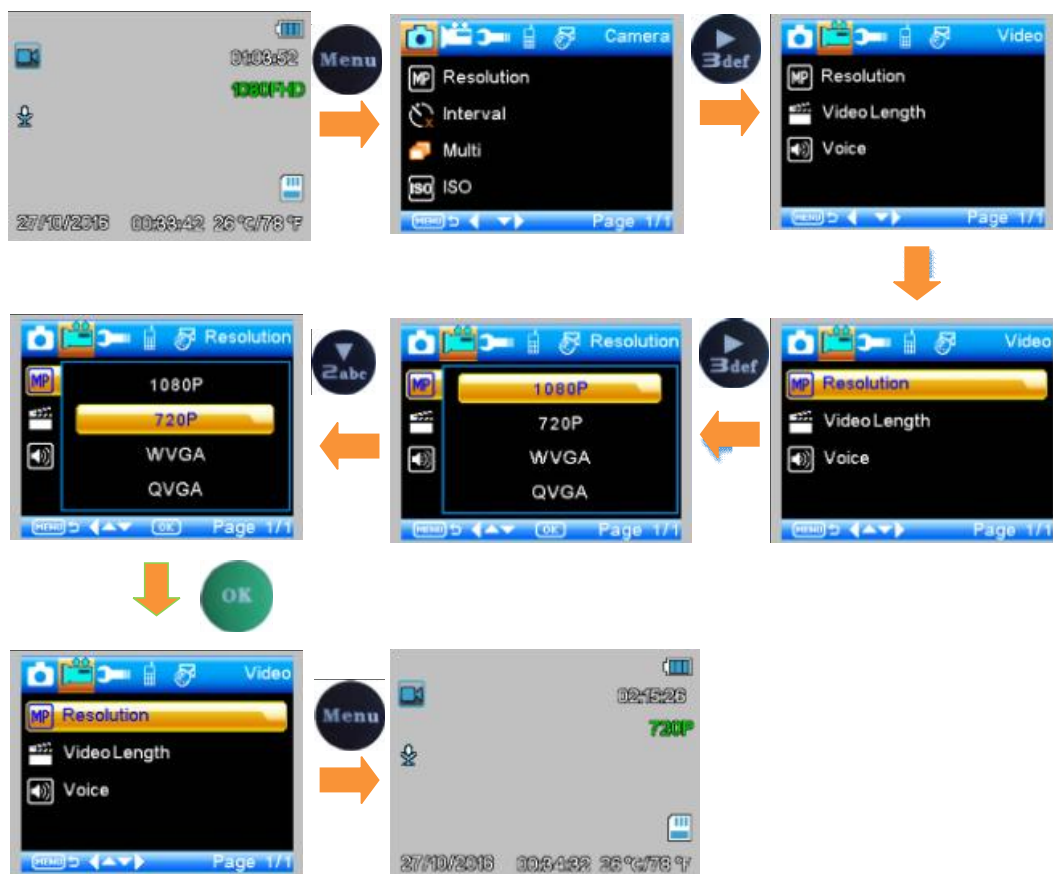
1. The mode is Camera or Camera & Video or Time lapse.
2. Delay, Sequence and ISO setting operations are the same.

3.6.2 Video Menu setting



Menu	Content	Description
Resolution	1080P, 720P, WVGA, QVGA	Video size
Video Length	10S, 30S, 60S, 90S	The time length of video
Record Audio	On, Off	If On, Video sound is recorded

To change 1080P to 720P Resolution, the remoter operations are:



Note:

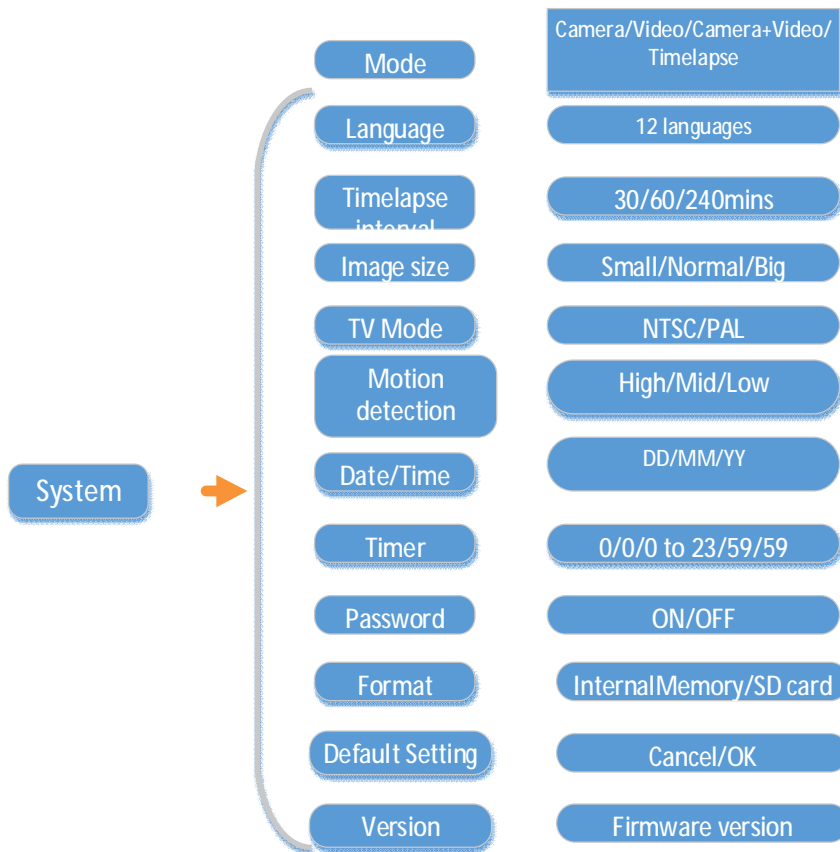
1. The mode is 1080P video mode.
2. Video length and Voice setting operations are same.

3.6.3 Time lapse setting

Time lapse means camera take pictures regularly no matter there is motion or not.

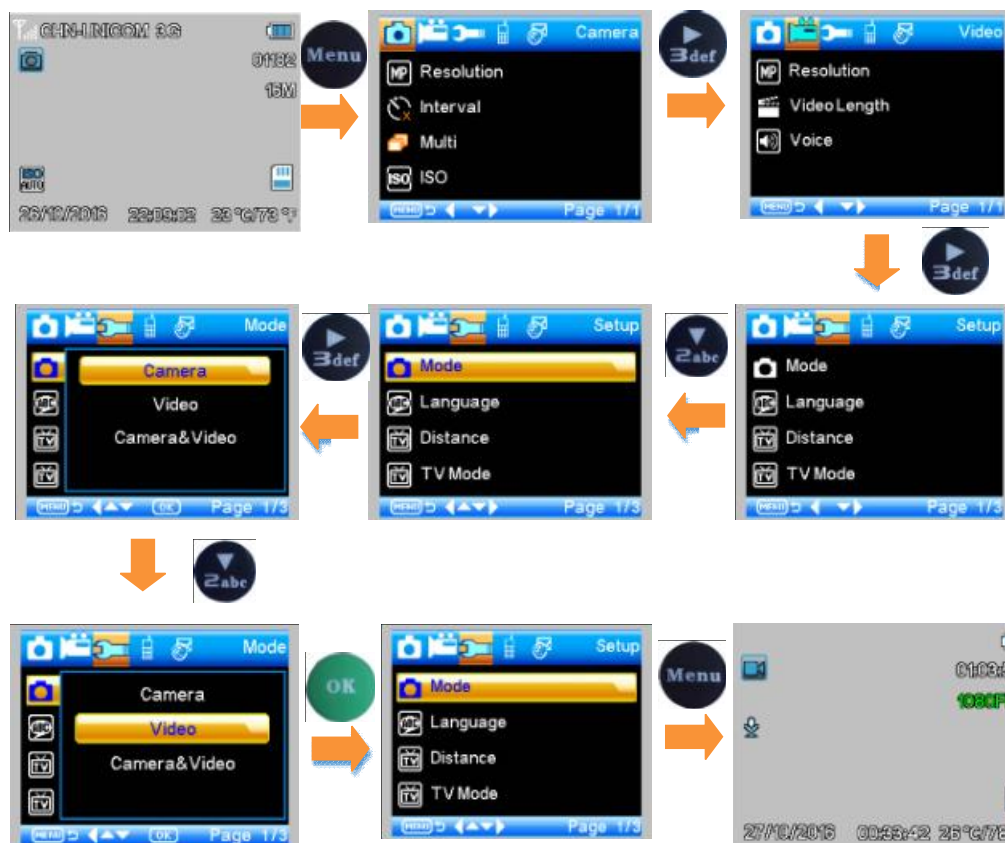
Working mode-TIMELAPSE, choose – TIMELAPSEINTERVAL-set the working time (30/60/240minutes selectable)

3.6.4 System Menu



Menu	Content	Description
Mode	Camera, video, camera & video Time lapse	Taking picture, video, picture and video, taking picture regular
Language	English, François, Deutsch and so on	Camera Menu language
TV Mode	NTSC, PAL	TV play mode
Date/Time	31-07-2014 15:49:40	Date-Month-Year Hour: Minute: Second
Password ON/OFF	ON, OFF	Password of entering camera
Password	****	4 digital numbers(1314 Universal password)
Timer	On, Off	If On, the camera only works in the period

To change Camera to Video mode, the remoter operations are:



Note:

1. Language, Distance, TV Mode, Format and Default setting are same.

Setting	Default	Items
Mode	Camera	Camera, Video, Camera&Video, Time lapse
Resolution (Camera)	16M	16M, 12M, 8M
Delay	1 Seconds	1-30 Seconds, 1-30 Minute
Multi	Single	Single, 3, 6, 9 Pictures
ISO	Auto	Auto 100, 200, 400
Resolution (Video)	1080P	1080P, 720P, WVGA, QVGA
Video Length	10s	10s, 30s, 60s, 90s
Date/Time	Same as last time	YY/MM/DD, MM/DD/YY, DD/MM/YY Adjust
PIR Distance	High	High, Normal, Low
Language	English	12 Languages selectable
Timer	0 0 0 to 23 59 59	Adjustable
Format	Internal Memory	Internal Memory, SD Card
TV Mode	NTSC	NTSC, PAL
Password	Off	Off, On

2. In Date/Time, Timer and Password setting:

- a. Press “Up” or “Down” to select number
- b. Press “Left” to enter into next menu

3.6.5 MMS Menu

MMS	ON/OFF
Country	Set in MMSCONFIG
MMS Phone	Set in MMSCONFIG
MMS E-mail	Set in MMSCONFIG

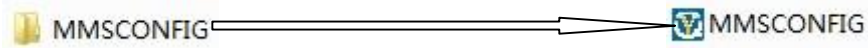
3.6.6 SMTP Menu

SMTP	ON/OFF
Country	Set in MMSCONFIG
SMTP E-mail	Set in MMSCONFIG

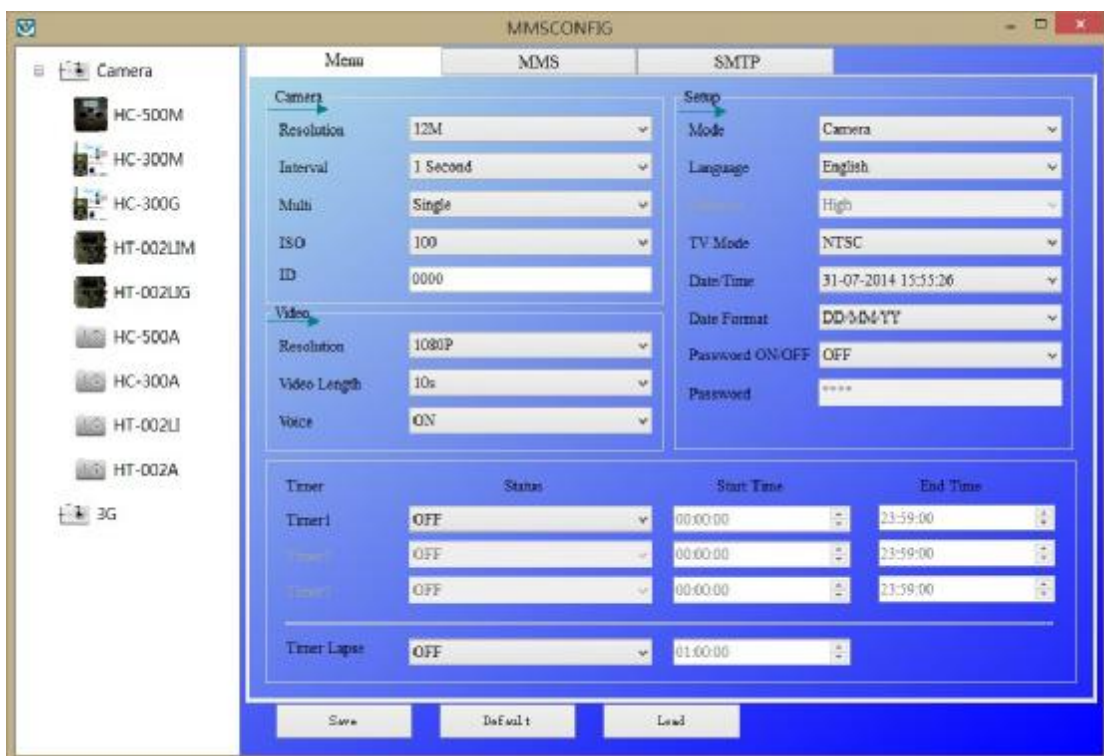
4. MMSCONFIG Setting

4.1 Load CD into the computer

4.2 Click the MMSCONFIG.exe file from MMSCONFIG folder



4.3 Fix Camera, Video and System Menu Setting(the second way to set the menu)



Note: If you have done the menu setting by remoter in TEST mode, you can skip 4.3.

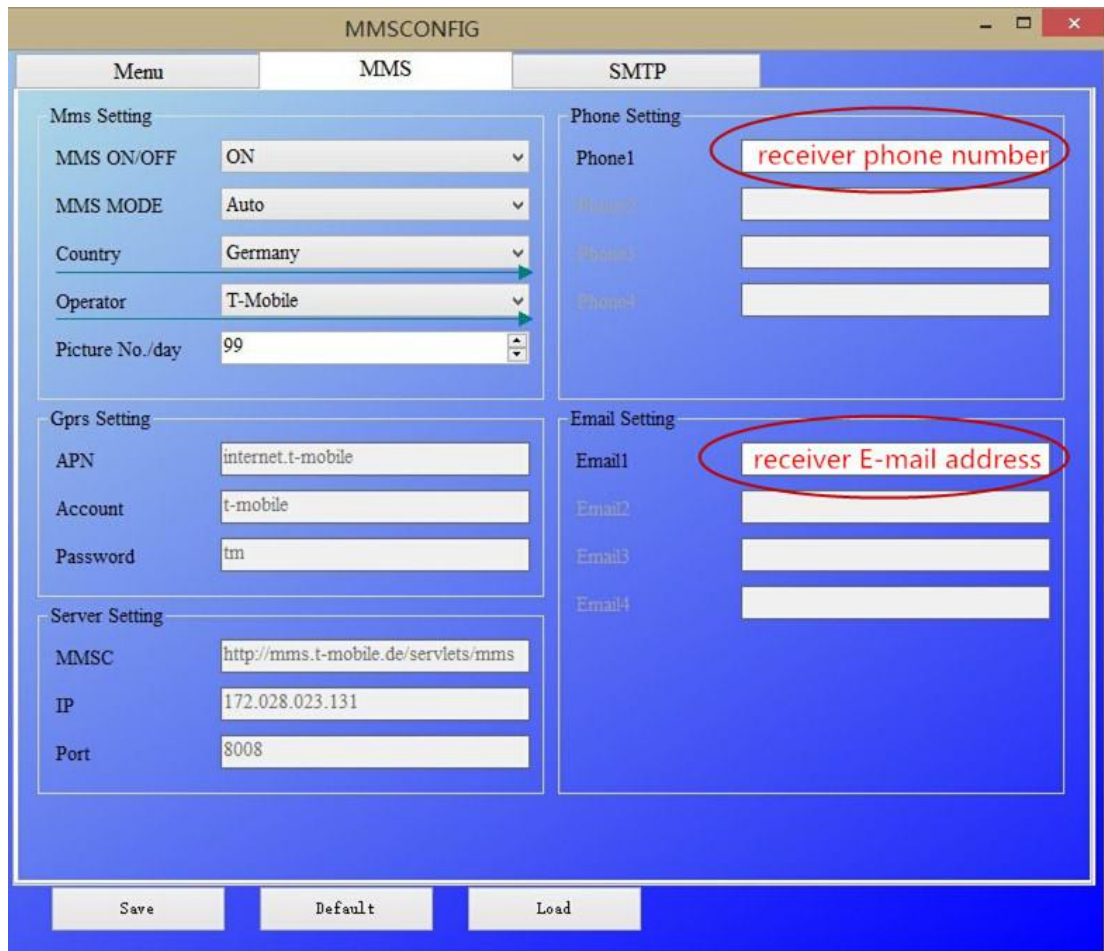
4.4 Fix MMS Setting

4.4.1 Auto MMS Mode:

In Auto MMS Mode, there is configured information for selection

- a. Choose Country
- b. Choose Operator

- c. Fill in the phone number in the right side blank column as receiver
- d. Fill in the email address for photos receiving

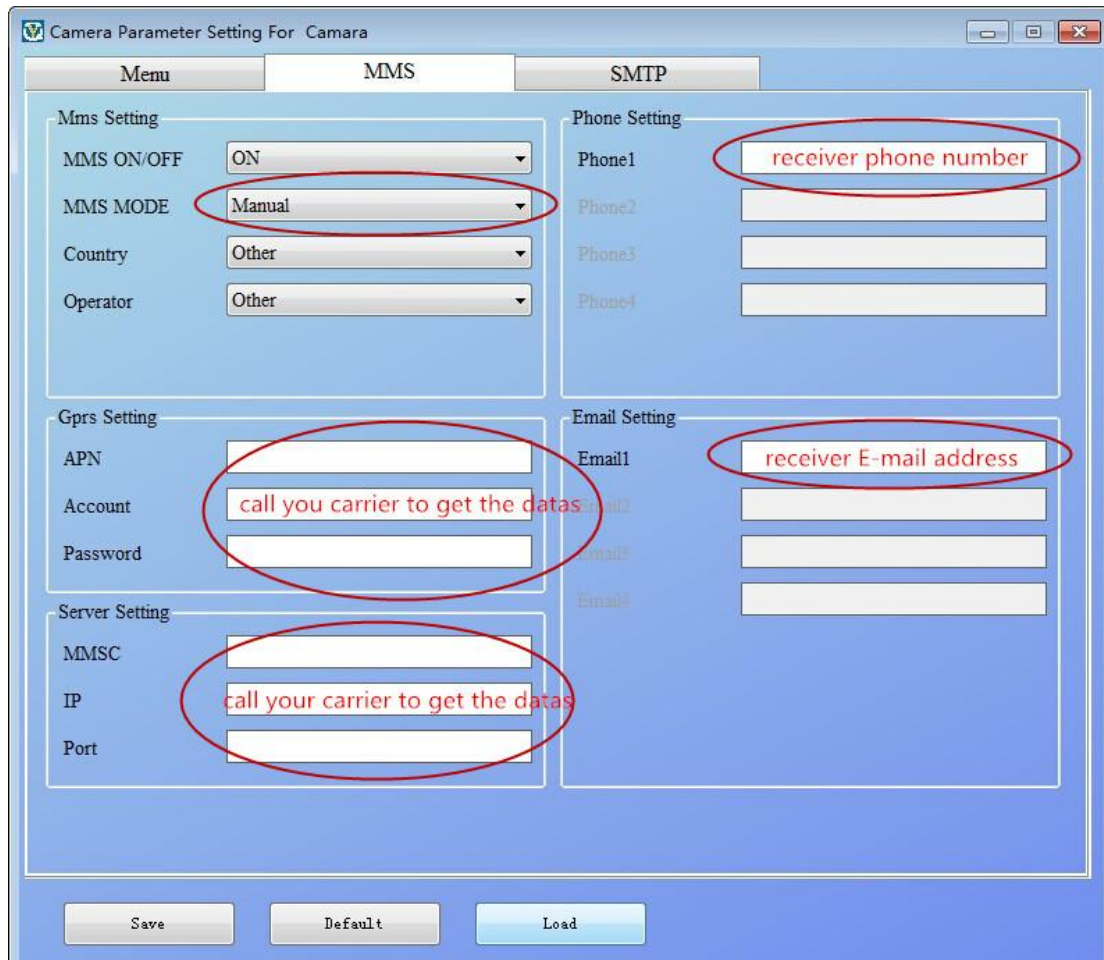


4.4.2. Manual MMS Mode:

If there is no configured information for selection, please choose Manual MMS Mode.

Firstly, User need to choose manual and contact SIM card carrier to get and fill in the APN, Account, Password, MMSC, IP and Port information.

Secondly, fill in receiver phone number or E-mail address at right side.



4.5 Fix SMTP Setting

This way of sending pictures is also called GPRS transmission by users. It's highly welcome now, because the picture is sent from email to email, only charging the flow cost.

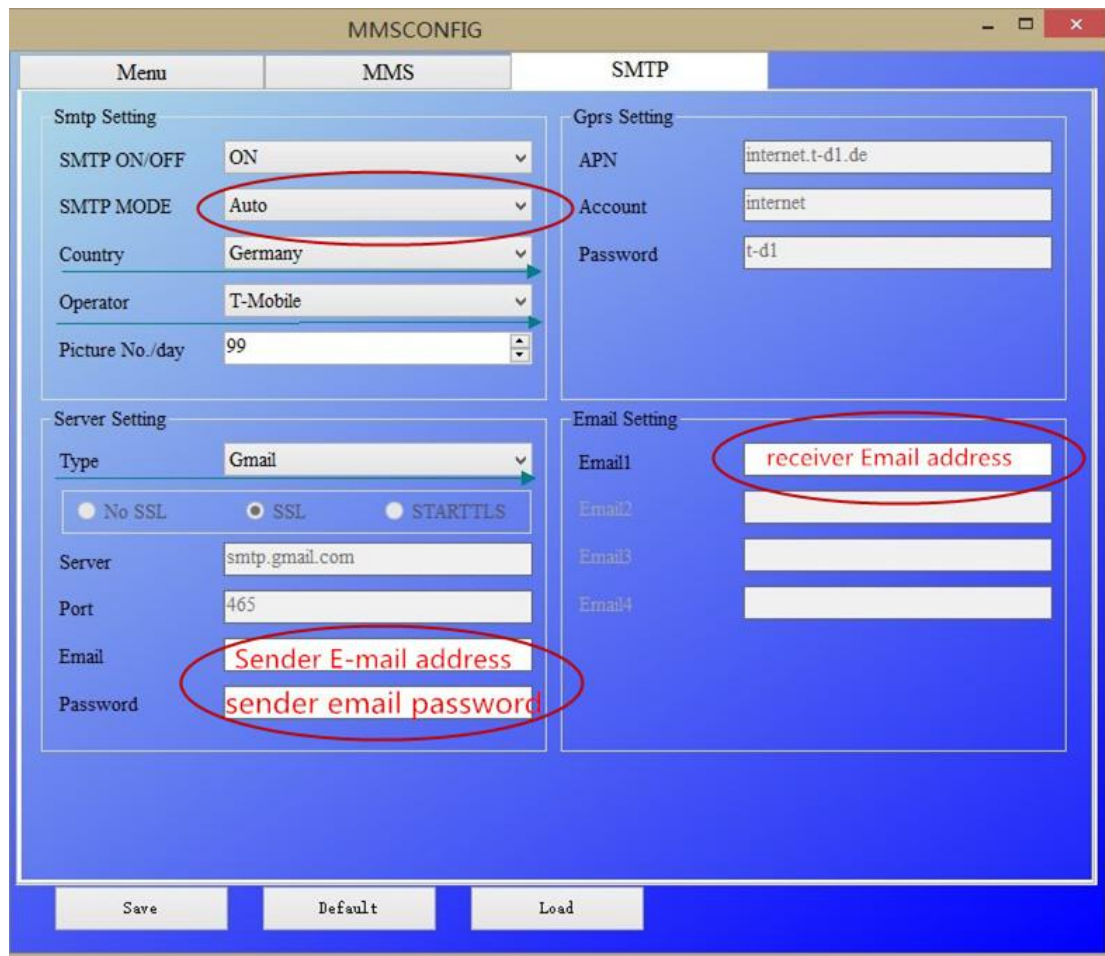
4.5.1 Auto SMTP Mode:

In Auto SMTP Mode, there is configured information for selection

- a. Choose Country
- b. Choose Operator
- c. Choose Type of email
- d. Add sending email address on the left

e. Add sending email address password on the left

f. Add receiving email address on the right



4.5.2 Manual SMTP Mode:

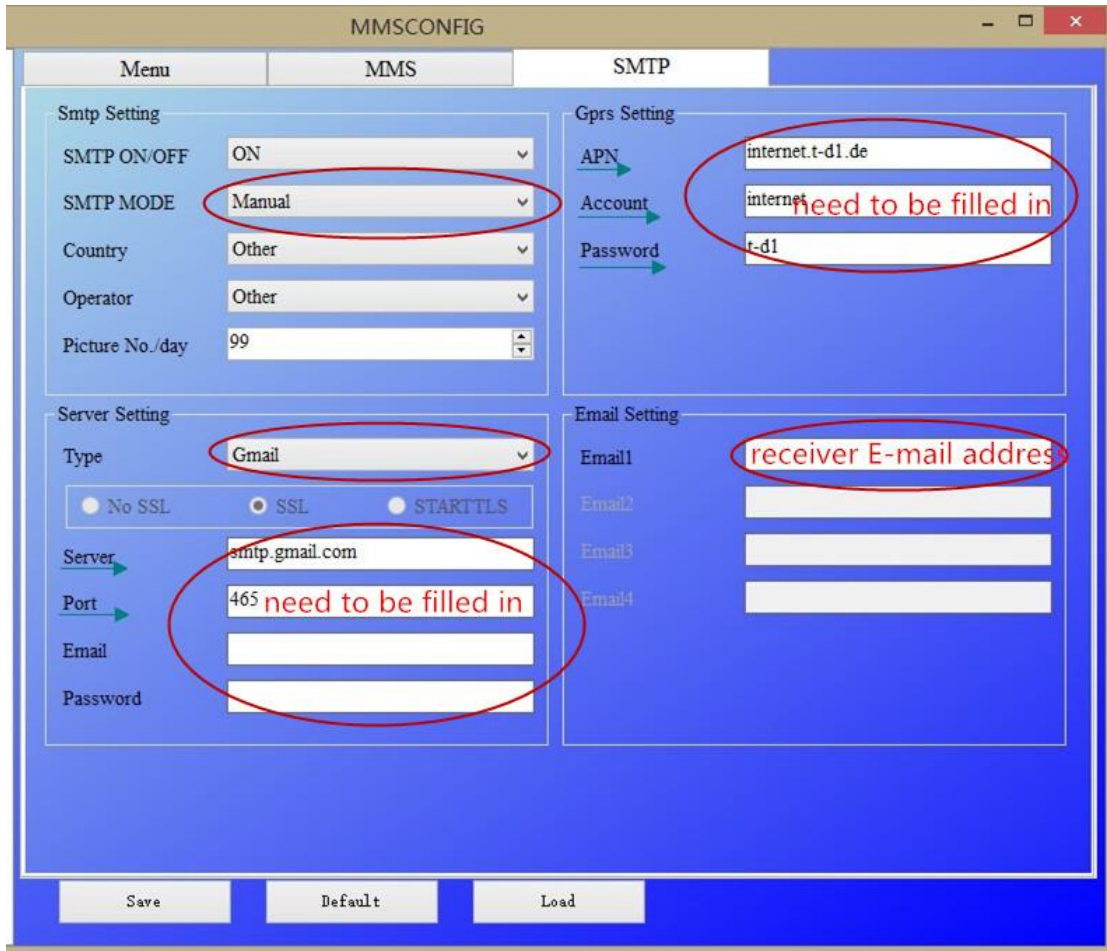
If there is no configured information for selection, please choose Manual SMTP Mode.

Firstly, User need to contact SIM card carrier to get APN, Account, Password information and fill in; contact sending email provider to get server, port information.

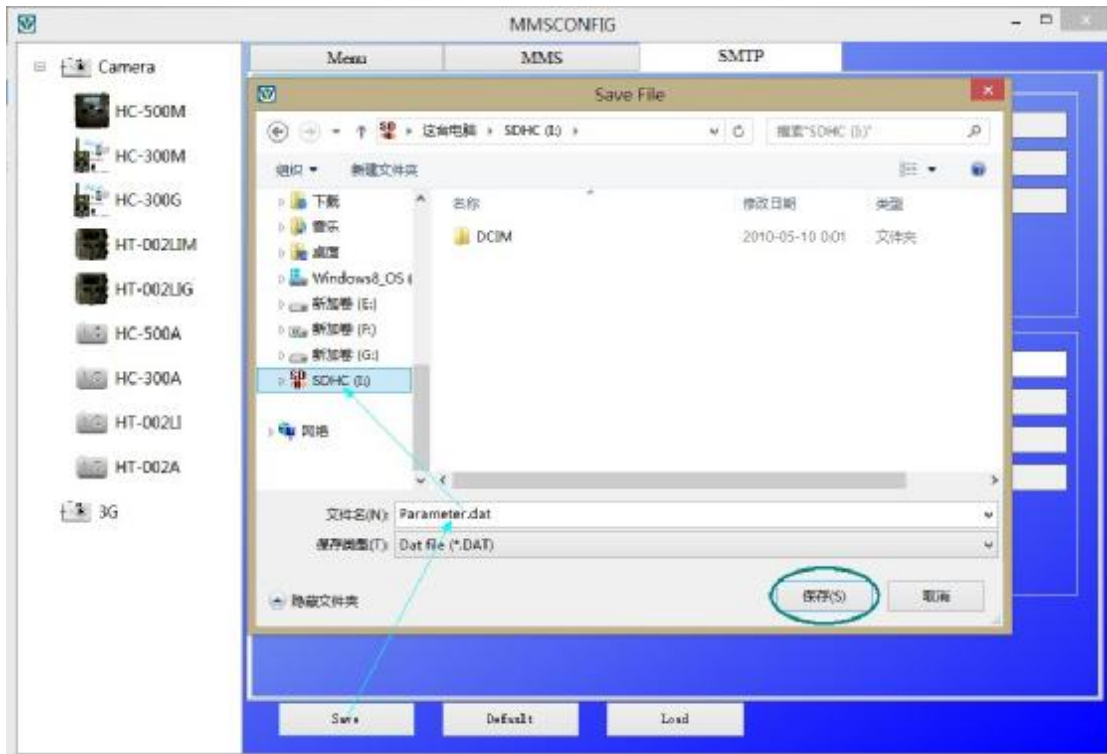
a. Add sending email address on the left

b. Add sending email address password on the left

c. Add receiving email address on the right



4.6 Save the file “Parameter. dat” to TF card



5. SMS Command Code

There are 2 ways for using:

1. Send SMS code directly
2. Install phone application, select function command

The SMS codes are:

Code	Function	Meaning
530	Camera Start	Start Working
531	Camera Sleep	Stop Working
500	Capture	Camera takes a picture, then sends it to configured phone or email
505	Capture and get pic(MMS mode)	Camera take a picture, then sends it to current phone
520	Get Pic information	Camera send a a text with picture number, SD card capacity, battery lever.

6. Firmware Upgrade

This camera is equipped with an automatic upgrade function for you. Upgrading is needed only when an improved firmware is available. The operations are as following:

1. Unzip the update file
2. Copy the XXX.bin file to TF card.
3. Insert the TF card into the camera.
4. Power on the camera (Test Mode) .
5. The camera will read it and update itself automatically. When updating the camera, its screen is black and the indicator light will flash approx 10s.
6. It will come to the menu surface after upgrade successfully.
7. Delete the firmware from the TF card.(If you don't do this, the camera will upgrade every time when power on).
8. Insert the TF card into the camera for its working.

7. Specification

Image Sensor	5 Mega Pixels Color CMOS
Memory	TF Card to 32GB
Lens	F=3.1; FOV=120 °
Size	145mm * 80mm * 55 mm
TFT Display Screen	2.0 inch
LED	Black Invisible 940nm
PIR Distance	High/Normal/Low
PIR Sensor Sight Angle	120 Degrees
Number of IR LED	24LEDs
Max Night Vision Lighting Distance	65ft/20 meters
Trigger Speed	0.5second
Triggering Interval :	1/5/10/30sec/min (default 1 sec)
Selectable Image Resolution:	16MP/12MP/8MP
Multiple Photo on one detection	1/3/6/9
Video Resolution	1080P/720P/VGA
File Format	JPEG/AVI
Date Time Imprint	Yes
Time lapse	Yes
GPS Location	Longitude and Latitude stamped
Password Security	4 digital PIN code
Frequency Bands	GSM 850/900/1800/1900 MHz UMTS/HSPA 850/900/1900/2100
Remote Control	SMS
GPRS transmission	Data transfer by email
MMS to phone	1-3 phone number
MMS to e-mail	1-3 email address
Stand-by current	0.2mA
Stand-by time	6Months
Power Supply	8×AA battery
Water proof	IP54
Security authentication	FCC,CE,RoHS

8. Packing List

